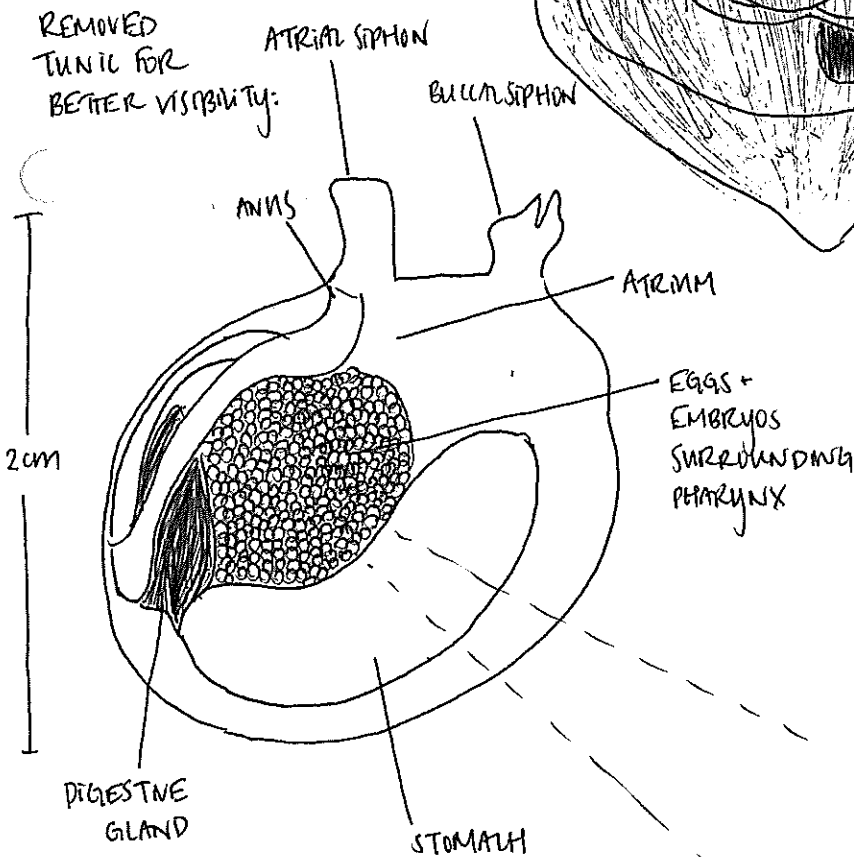
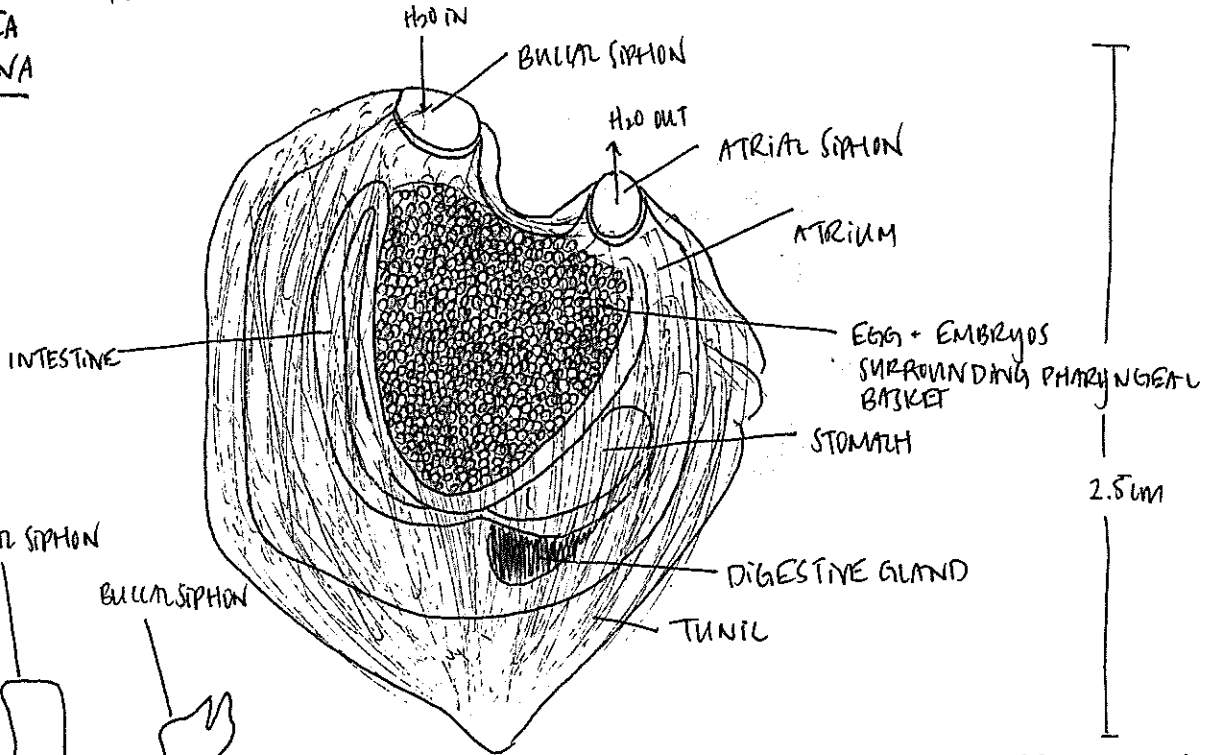
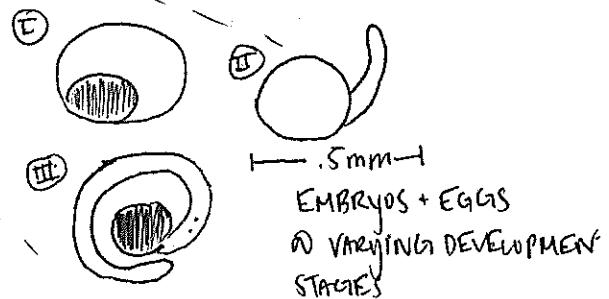


① SOLITARY:

PHYLUM CHORDATA  
 SUBPHYLUM UROCHORDATA  
 CLASS ASCIDEACEA  
 MOLGULA UTICINA

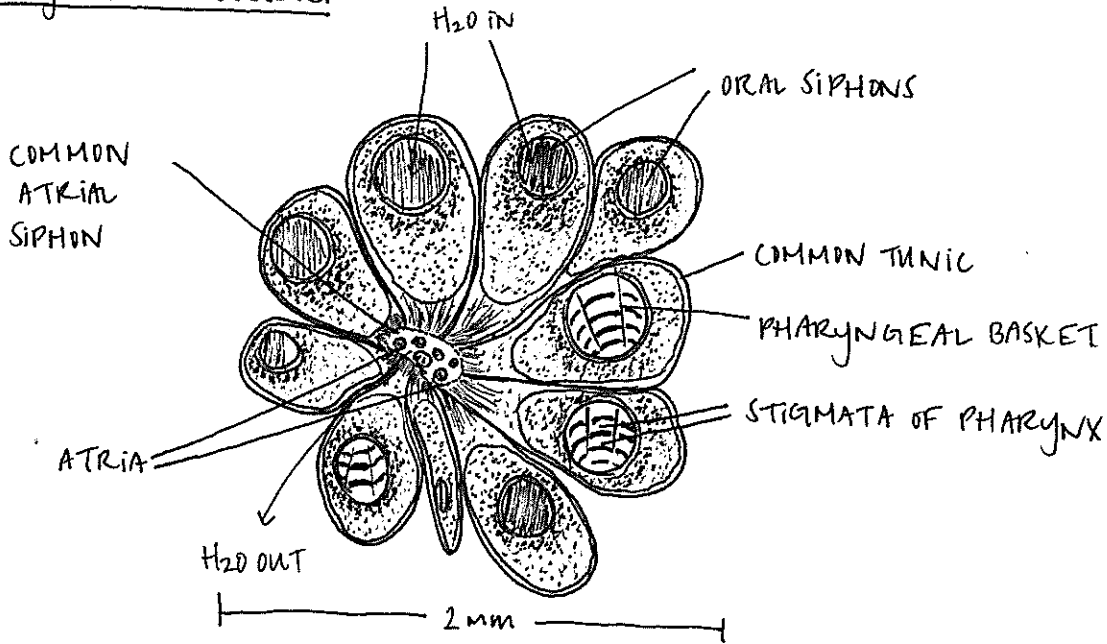


NOTES: COLOR: TUNIC OPAQUE CREAM, MAKING VISIBILITY OF INTERNAL STRUCTURES LIMITED; EMBRYOS BRIGHT PINK; DIGESTIVE GLAND BROWN; EVERYTHING ELSE YELLOWED-WHITE.  
 PHARYNGEAL SLITS: AGAIN, CHALLENGING TO SEE BECAUSE TONS OF EGGS + EMBRYOS WERE SQUISHING THE PHARYNGEAL BASKET. I DISSECTED THEM AWAY, SOMEWHAT MANGLING THE PHARYNGEAL SLITS. BUT I COULD STILL VISUALIZE THE WORDS THAT LIGHT'S MANUAL USES TO DISTINGUISH THIS SPECIES; COULD NOT MAKE AN UNFOLDED TISSUE PREP TO OBSERVE STIGMATA



## II) COLONIAL - COMPOUND:

PHYLUM CHORDATA  
 SUBPHYLUM UROCHORDATA  
 CLASS ASCIDIACEA  
 STOLIDOBANCHIA  
BOTRYLLUS SCHLOSSERI

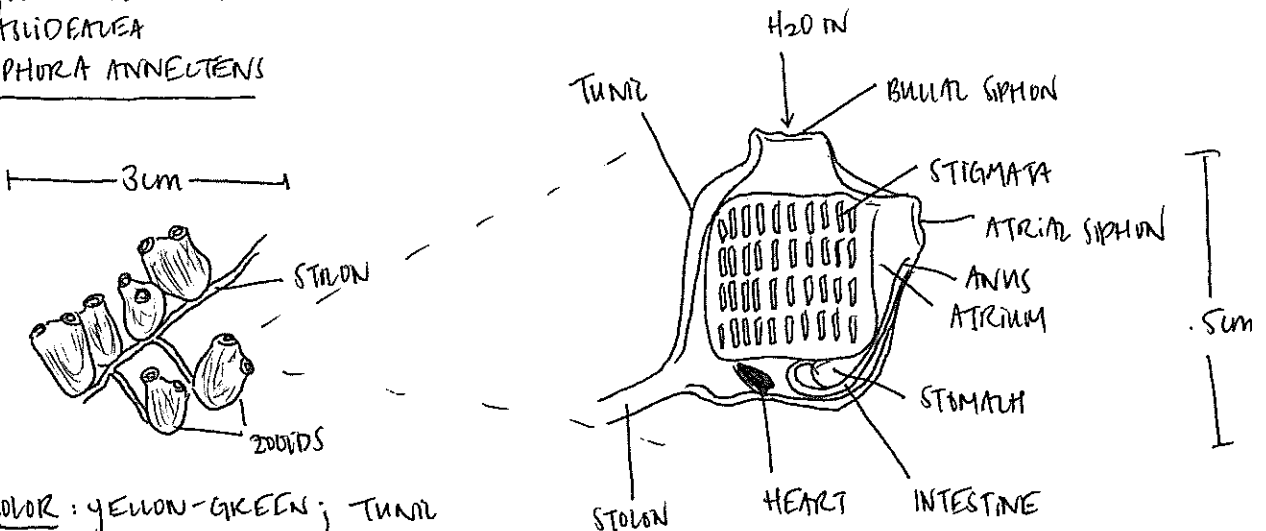


NOTES: COLOR: ORANGE, w/ WHITE + DARKER ORANGE SPECKS ON TUNIC  
BEHAVIOR / MOVEMENT: RESPOND TO TOUCH BY RETRACTING THEIR ORAL + ATRIAL SIPHONS. WILL LOSE SIPHONS WHEN TABLE IS BUMPED, TOO.

^ MANY WORK MORPHS AVAILABLE!

## III) COLONIAL - SOCIAL:

PHYLUM CHORDATA  
 SUBPHYLUM UROCHORDATA  
 CLASS ASCIDIACEA  
PEROPHORA ANNELETENS



NOTES: COLOR: YELLOW-GREEN; TUNIC CONSIDERABLY MORE TRANSLUCENT THAN OTHER SPECIES I OBSERVED