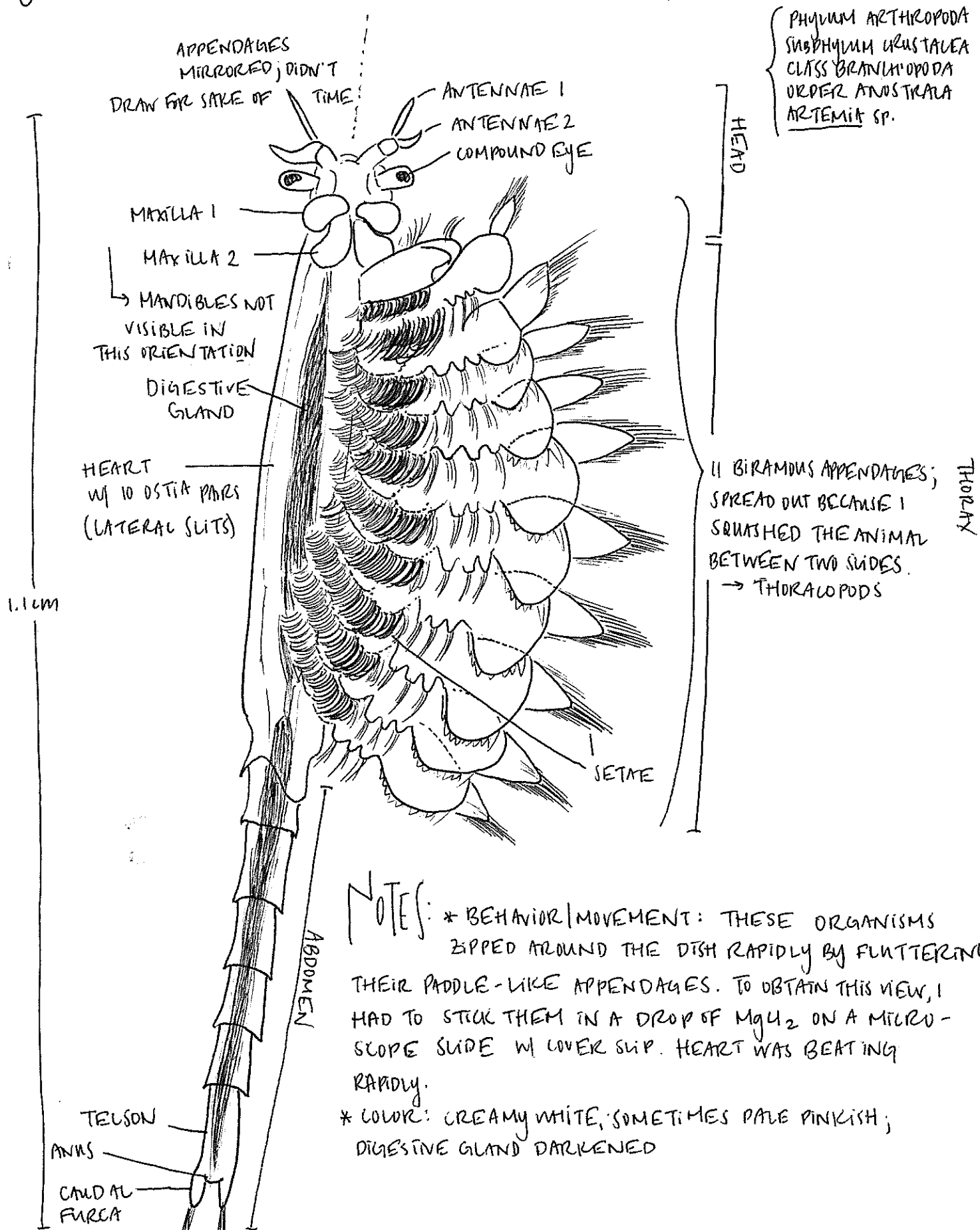


PHYLUM ARTHROPODA: SUBPHYLUM CRUSTACEA CLASS BRANCHIOPODA // 05.09.17

① ADULT BRINE SHRIMP: ♀; ♂ HAS EWINGATED HEAD STRUCTURES



PHYLUM ARTHROPODA
SUBPHYLUM CRUSTACEA
CLASS BRANCHIOPODA
ORDER ANOSTRALA
ARTEMIA SP.

APPENDAGES MIRRORED; DIDN'T DRAW FOR SAKE OF TIME

MANDIBLES NOT VISIBLE IN THIS ORIENTATION

11 BIRAMOUS APPENDAGES; SPREAD OUT BECAUSE I SQUASHED THE ANIMAL BETWEEN TWO SLIDES. → THORACOPODS

NOTES: * BEHAVIOR / MOVEMENT: THESE ORGANISMS ZIPPED AROUND THE DISH RAPIDLY BY FLUTTERING THEIR PADDLE-LIKE APPENDAGES. TO OBTAIN THIS VIEW, I HAD TO STICK THEM IN A DROP OF MgCl₂ ON A MICROSCOPE SLIDE W/ COVER SLIP. HEART WAS BEATING RAPIDLY.
* COLOR: CREAMY WHITE; SOMETIMES PALE PINKISH; DIGESTIVE GLAND DARKENED

1.1 CM

TELSON
ANUS
CAUDAL FURCA

ABDOMEN

SETAE

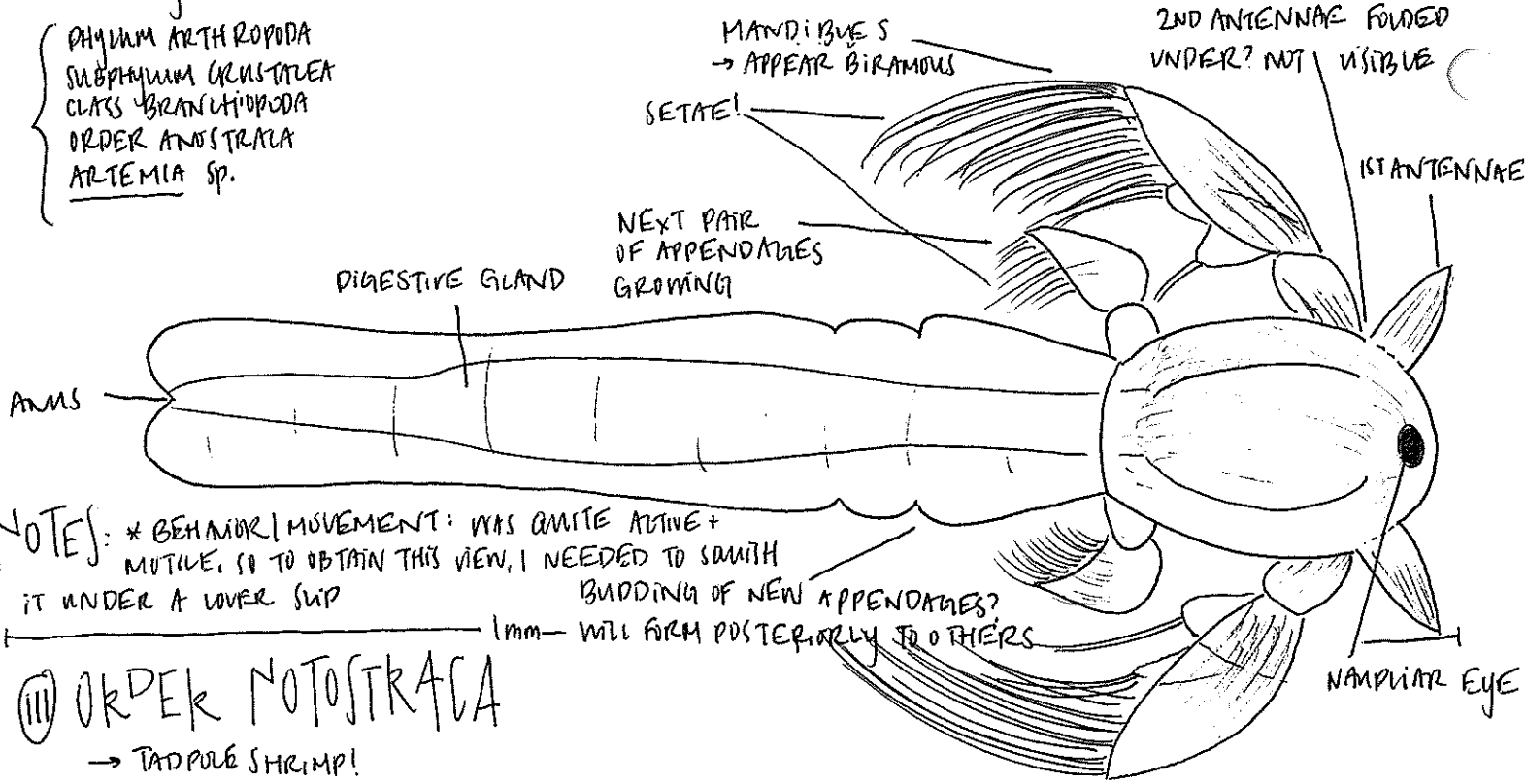
HEAD

THORAX

II NEWLY HATCHED ARTEMIA:

→ 4 DAY OLD NAUPLIUS!

PHYLUM ARTHROPODA
SUBPHYLUM CRUSTACEA
CLASS BRANCHIOPODA
ORDER ANOSTRACA
ARTEMIA sp.

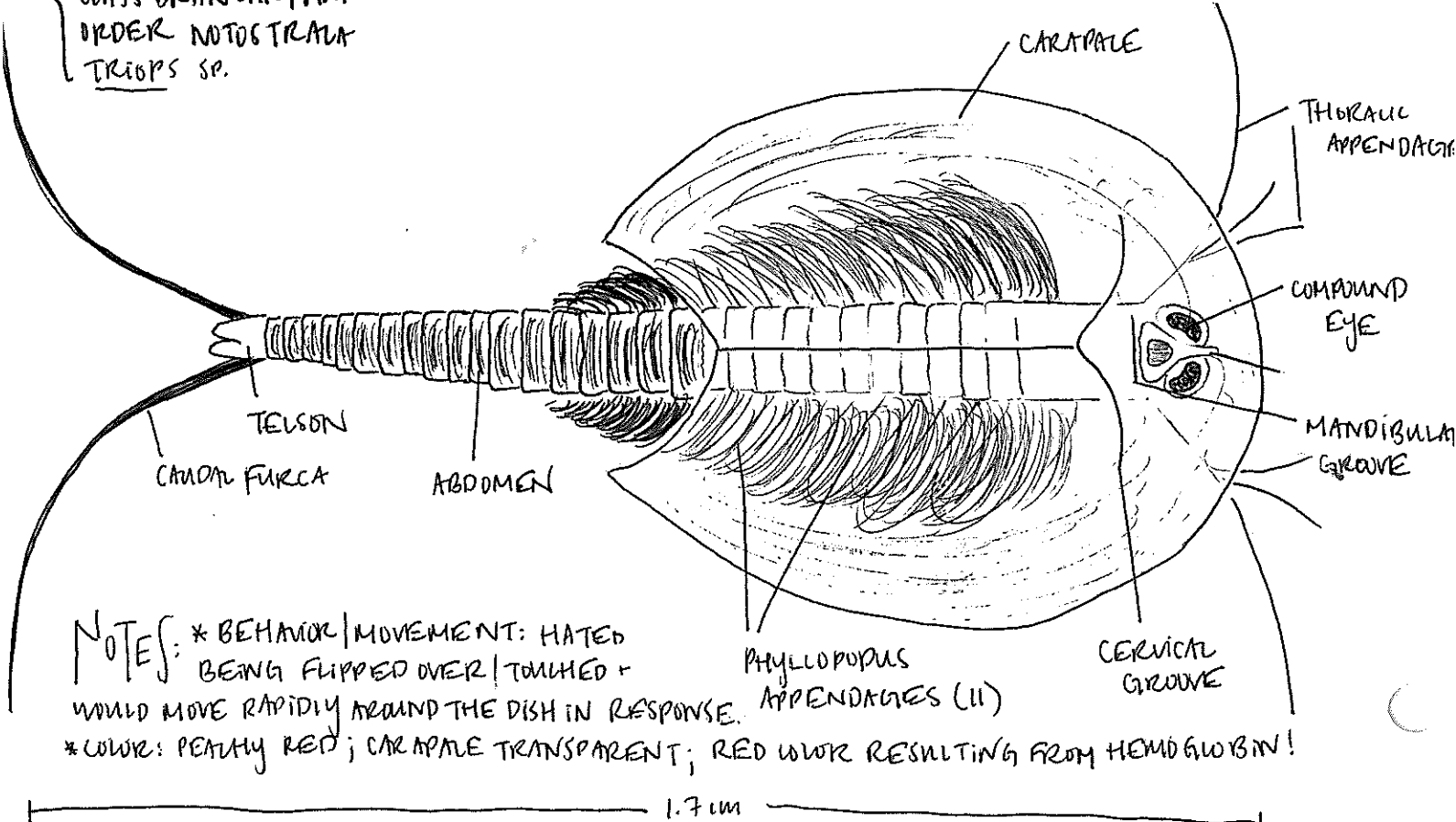


NOTES: * BEHAVIOR / MOVEMENT: WAS QUITE ACTIVE + MOTIVE, SO TO OBTAIN THIS VIEW, I NEEDED TO SMUSH IT UNDER A COVER SLIP
BIDDING OF NEW APPENDAGES?
1mm - WILL FORM POSTERIORLY TO OTHERS

III ORDER NOTOSTRACA

→ TADPOLE SHRIMP!

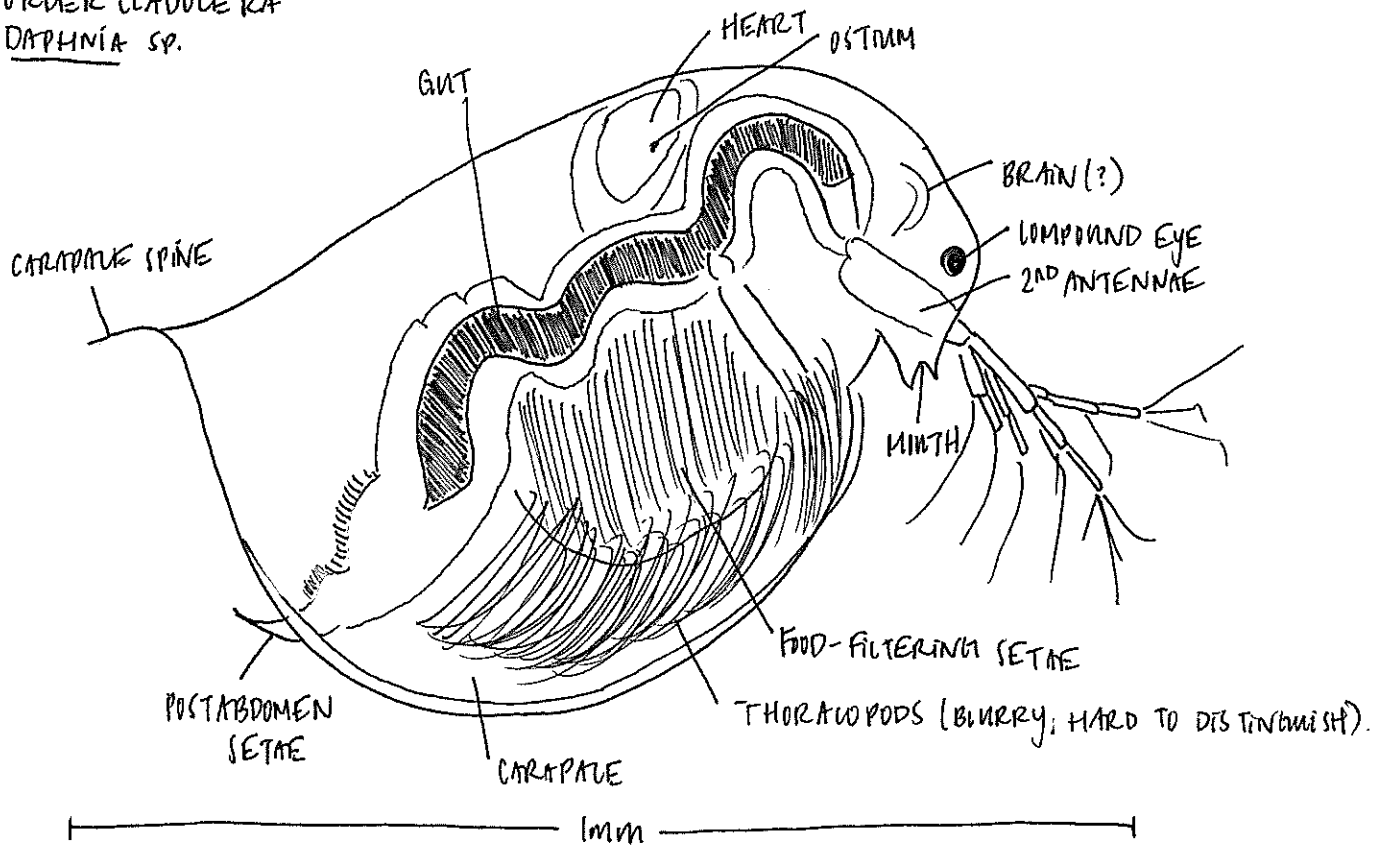
PHYLUM ARTHROPODA
SUBPHYLUM CRUSTACEA
CLASS BRANCHIOPODA
ORDER NOTOSTRACA
TRIOPS sp.



NOTES: * BEHAVIOR / MOVEMENT: HATED BEING FLIPPED OVER / TOUCHED + WOULD MOVE RAPIDLY AROUND THE DISH IN RESPONSE.
* COLOR: PEACHY RED; CARAPACE TRANSPARENT; RED COLOR RESULTING FROM HEMOGLOBIN!

IV) CLASS DIPLOSTRACA:

PHYLUM ARTHROPODA
 SUBPHYLUM CRUSTACEA
 CLASS DIPLOSTRACA =
 ORDER CLADOCERA
 DAPHNIA SP.



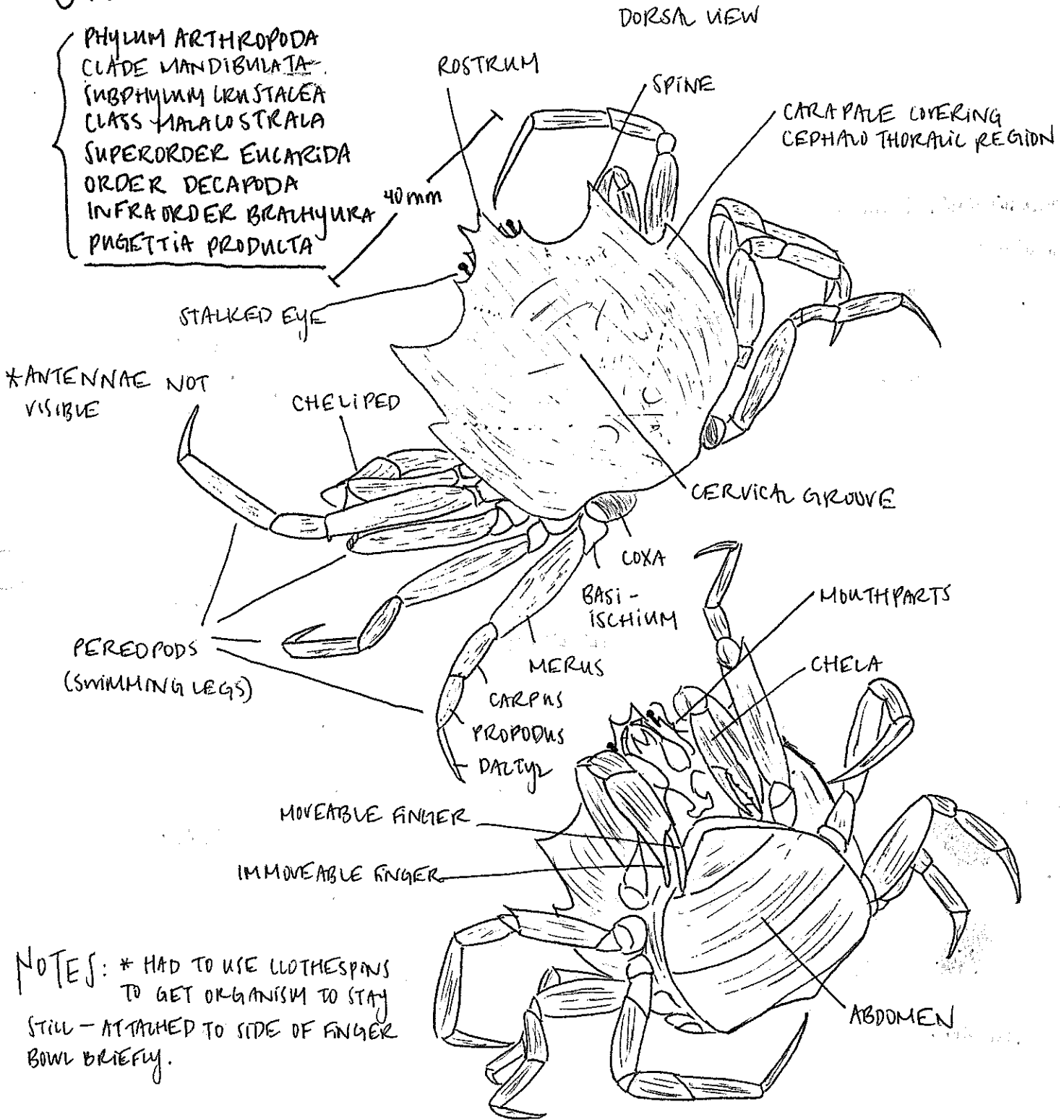
NOTES: * BEHAVIOR/MOVEMENT: OBSERVED HEART BEATING VERY FAST! ORGANISM STAYED PUT WELL. COULD SEE COMPOUND EYE MOVING AROUND, AS IF IT WERE LOOKING AT ME - QUITE BIZARRE.



PHYLUM ARTHROPODA: SUBPHYLUM KRUSTALEA CLASS MALACOSTRACA // 05.11.17

1 BRACHYURA:

PHYLUM ARTHROPODA
 CLADE MANDIBULATA
 SUBPHYLUM KRUSTALEA
 CLASS MALACOSTRACA
 SUPERORDER EUCAEIDA
 ORDER DECAPODA
 INFRAORDER BRACHYURA
 PAGETIA PRODUCTA



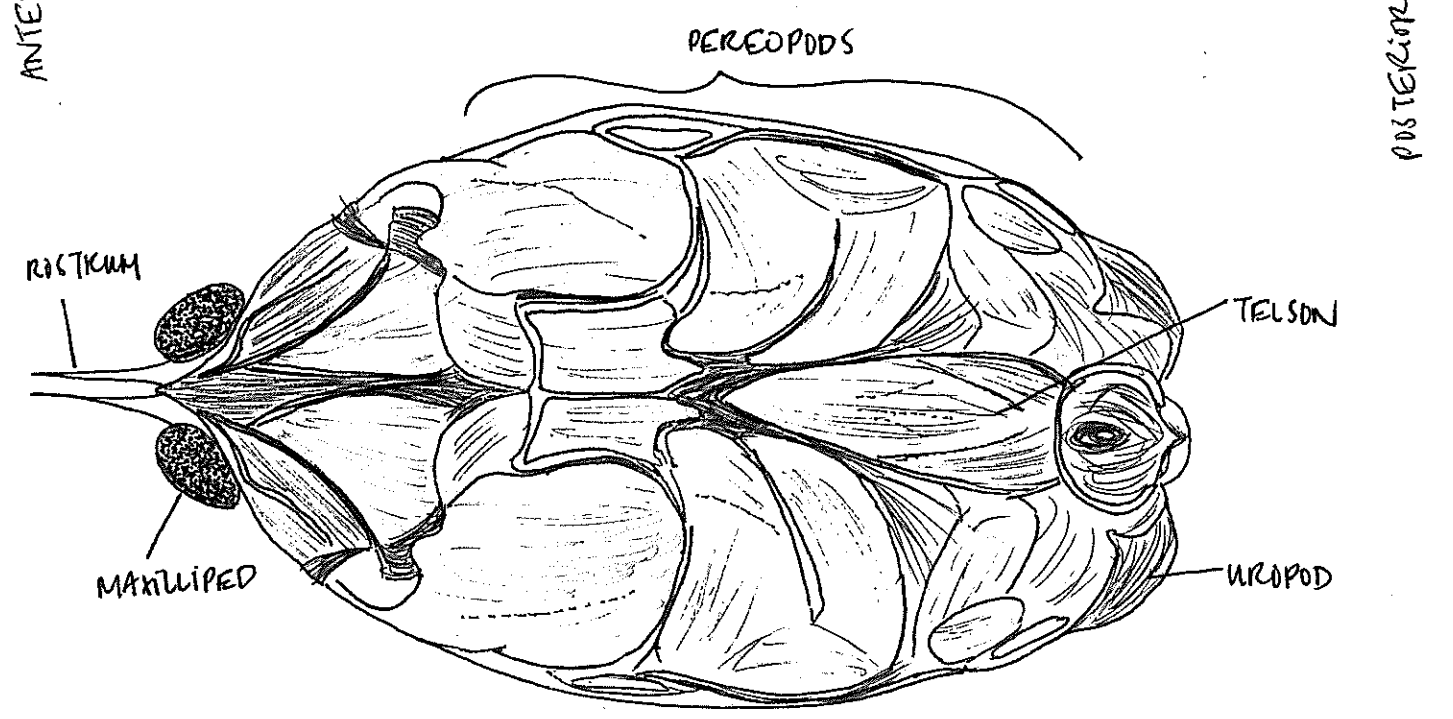
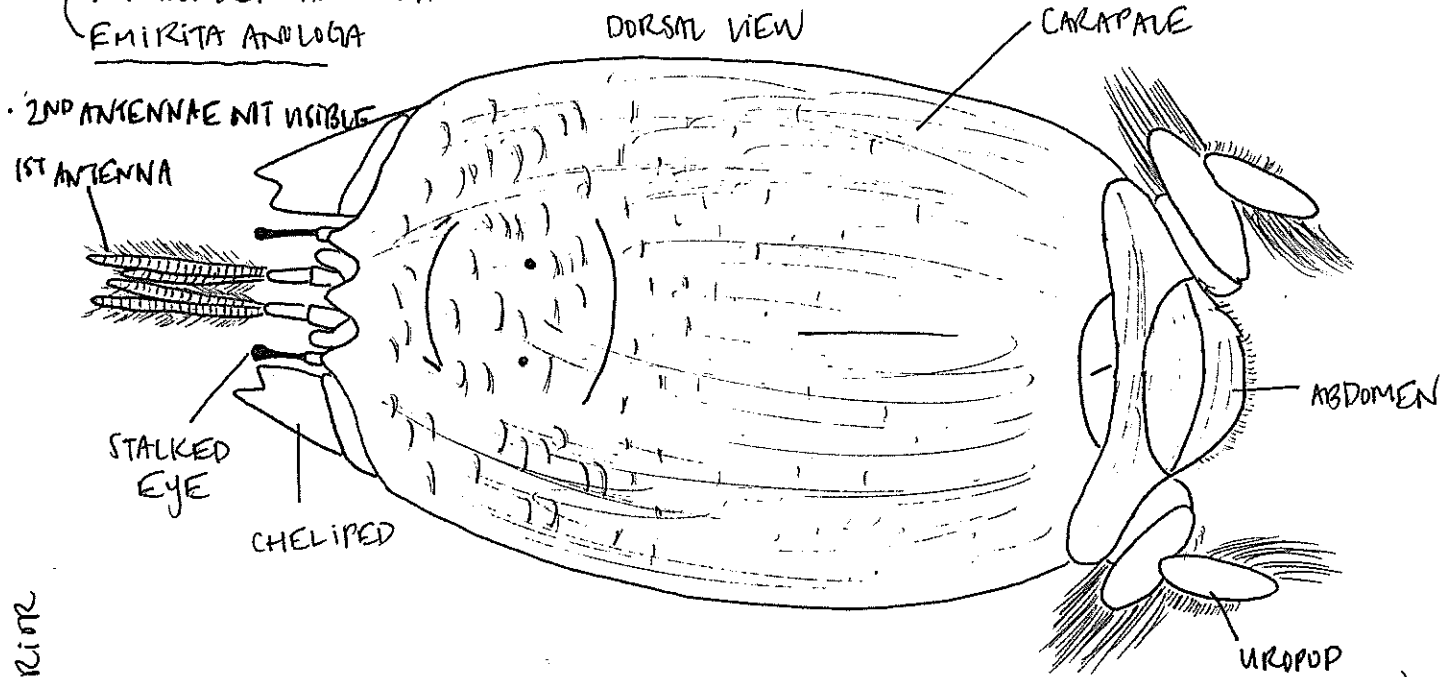
NOTES: * HAD TO USE CLOTHESPINS TO GET ORGANISM TO STAY STILL - ATTACHED TO SIDE OF FINGER BOWL BRIEFLY.

VENTRAL VIEW (♀)

II ANOMURA:

PHYLUM ARTHROPODA
 CLADE MANDIBULATA
 SUBPHYLUM CRUSTACEA
 CLASS MALACOSTRACA
 SUPERORDER EUCARIDA
 ORDER DECAPODA
 INFRAORDER ANOMURA
 EMIRITA ANOLOGA

NOTES: ANOTHER ACTIVE ORGANISM; HAD TO PLACE BETWEEN TWO BOWLS TO GET IT TO SIT STILL IN THIS VIEW. IT OTHERWISE KEPT ATTEMPTING TO BURROW ITSELF INTO THE GLASS BY WIGGLING ITS BUTT (PADDLING ITS UROPODS) - A FUTILE ATTEMPT, INDEED.

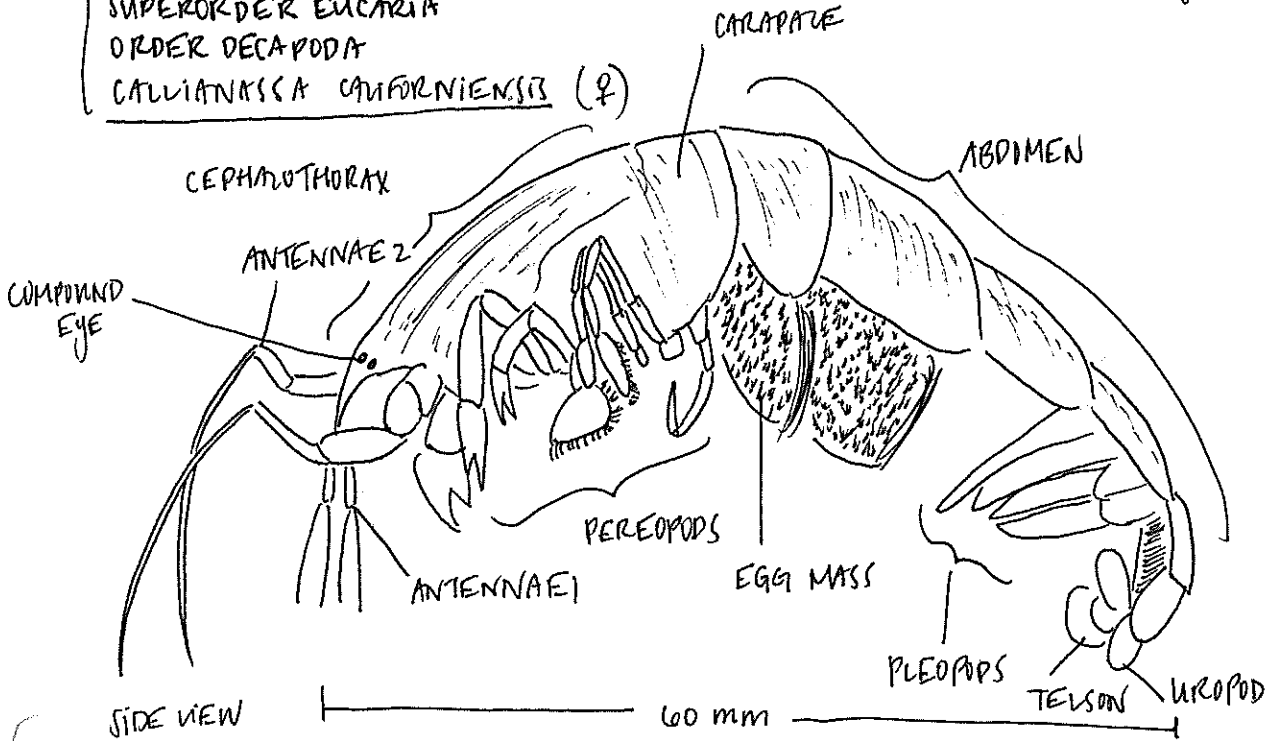


31mm

III) LOBSTER-LIKE DECAPOD:

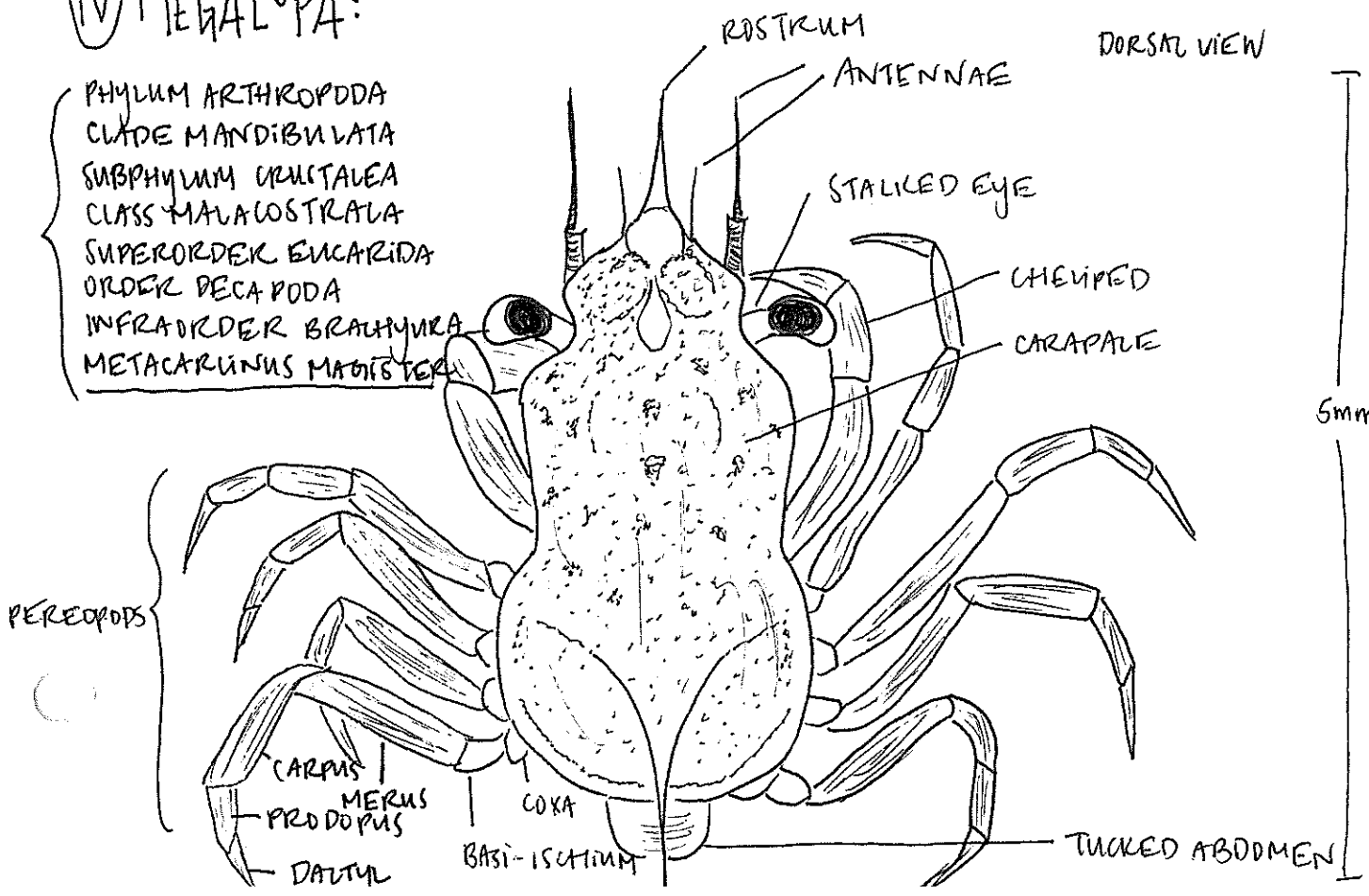
PHYLUM ARTHROPODA
 CLADE MANDIBULATA
 SUBPHYLUM CRUSTALEA
 CLASS MALACOSTRALA
 SUPERORDER EUCARIA
 ORDER DECAPODA
 CALLINASSA CALIFORNIENSIS (♀)

NOTES: * LITTLE LADY WAS PRETTY MANGLED, BUT WAS CARRYING PRETTY HIGHLY DEVELOPED EGGS - WOULD SEE THEIR EYES!



IV) MEGALOPA:

PHYLUM ARTHROPODA
 CLADE MANDIBULATA
 SUBPHYLUM CRUSTALEA
 CLASS MALACOSTRALA
 SUPERORDER EUCARIDA
 ORDER DECAPODA
 INFRADORDER BRACHYURA
 METACARINUS MASTIGERA



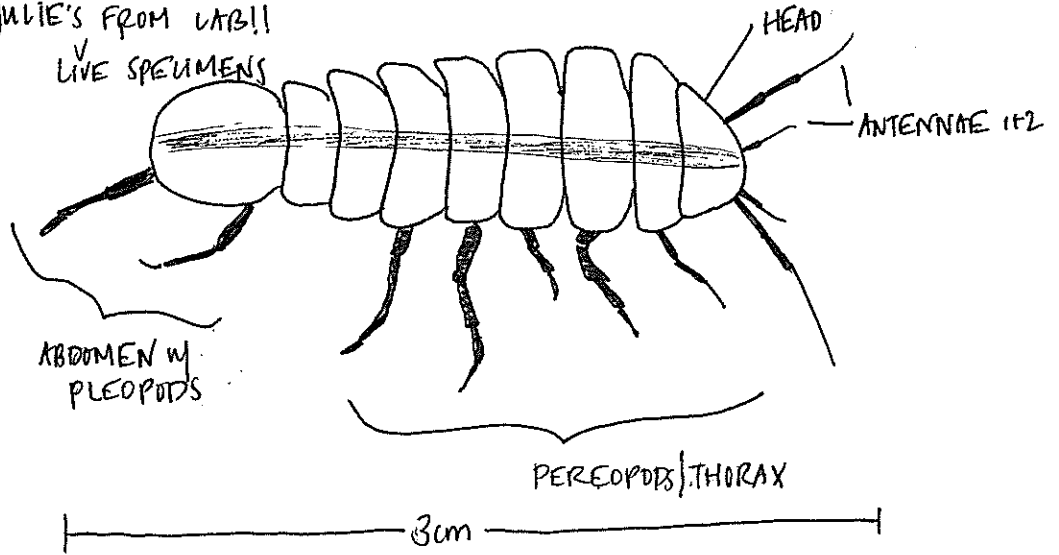
⑤ CRAB IDENTIFICATION:

WE IDENTIFIED: OREGONIA GRAVILIS (BRACHYURA), PAGURUS BERINGIANUS,
PAGURUS SAMUELIS, + PAGURUS GRANISOMANUS (ANOMURA)

⑥ ISOPOD: → USED ONE OF JULIE'S FROM LAB!!

(LIMBS REPEATED ON OTHER SIDE)

- PHYLUM ARTHROPODA
- CLADE MANDIBULATA
- SUBPHYLUM KRUSTACEA
- CLASS MALACOSTRACA
- SUPERORDER PERALATRODIA
- ORDER ISOPODA
- IPOTEA



PHYLUM ARTHROPODA : CRAB DISSECTION!

05. 11. 17

PHYLUM ARTHROPODA
 BLADE MANDIBULATA
 SUBPHYLUM KRUSTACEA
 CLASS MALACOSTRACA
 SUPERORDER EUCARIA
 ORDER DECAPODA
 INFRAORDER BRACHYURA
 CONVER PRODUCTUS ♀

DORSAL VIEW ROSTRUM



EPIBIONT BARNACLES

CARAPACE

CERVICAL GROOVE

ISCM

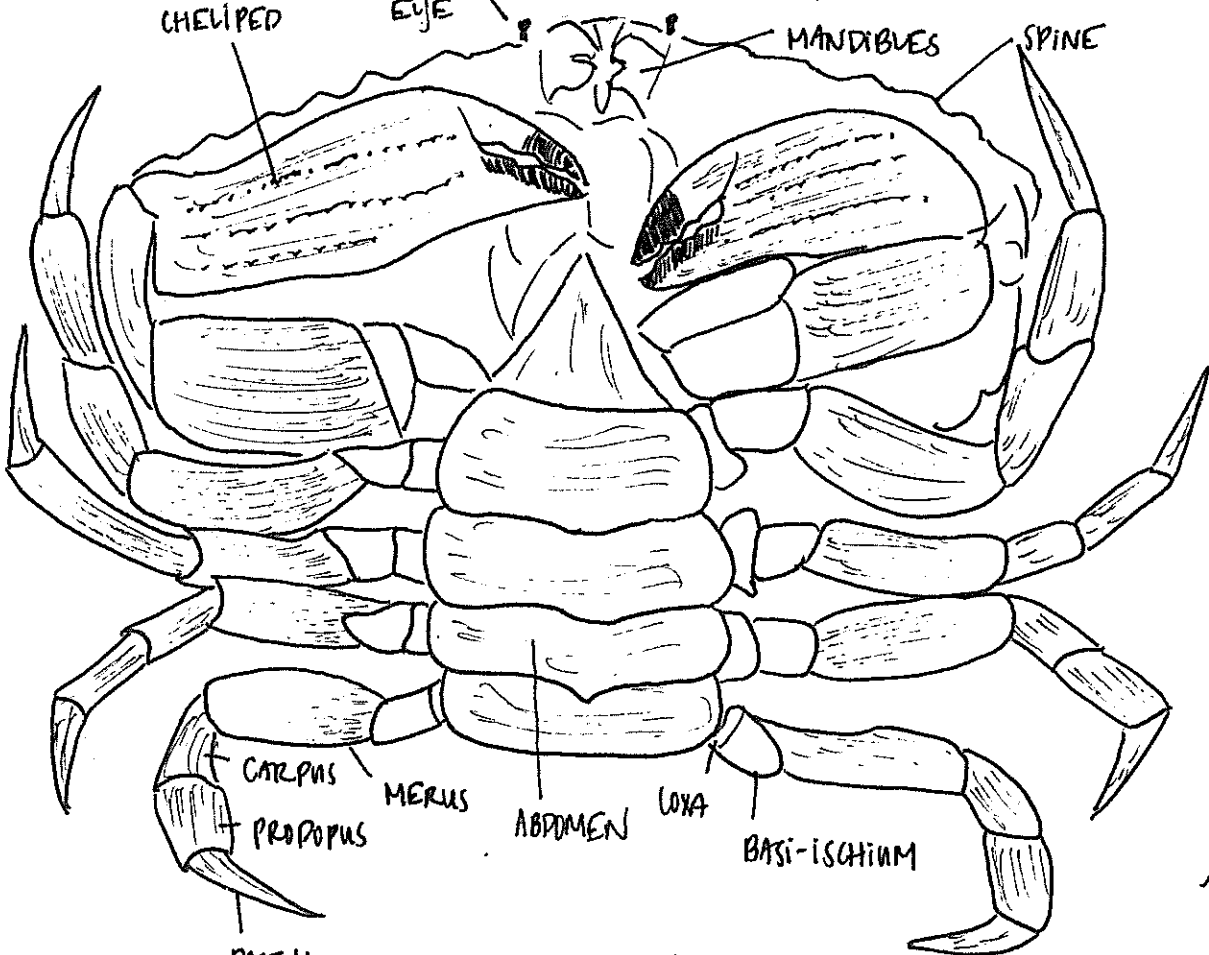
STALKED EYE

CHELIPED

MANDIBLES

SPINE

① EXTERNAL ANATOMY

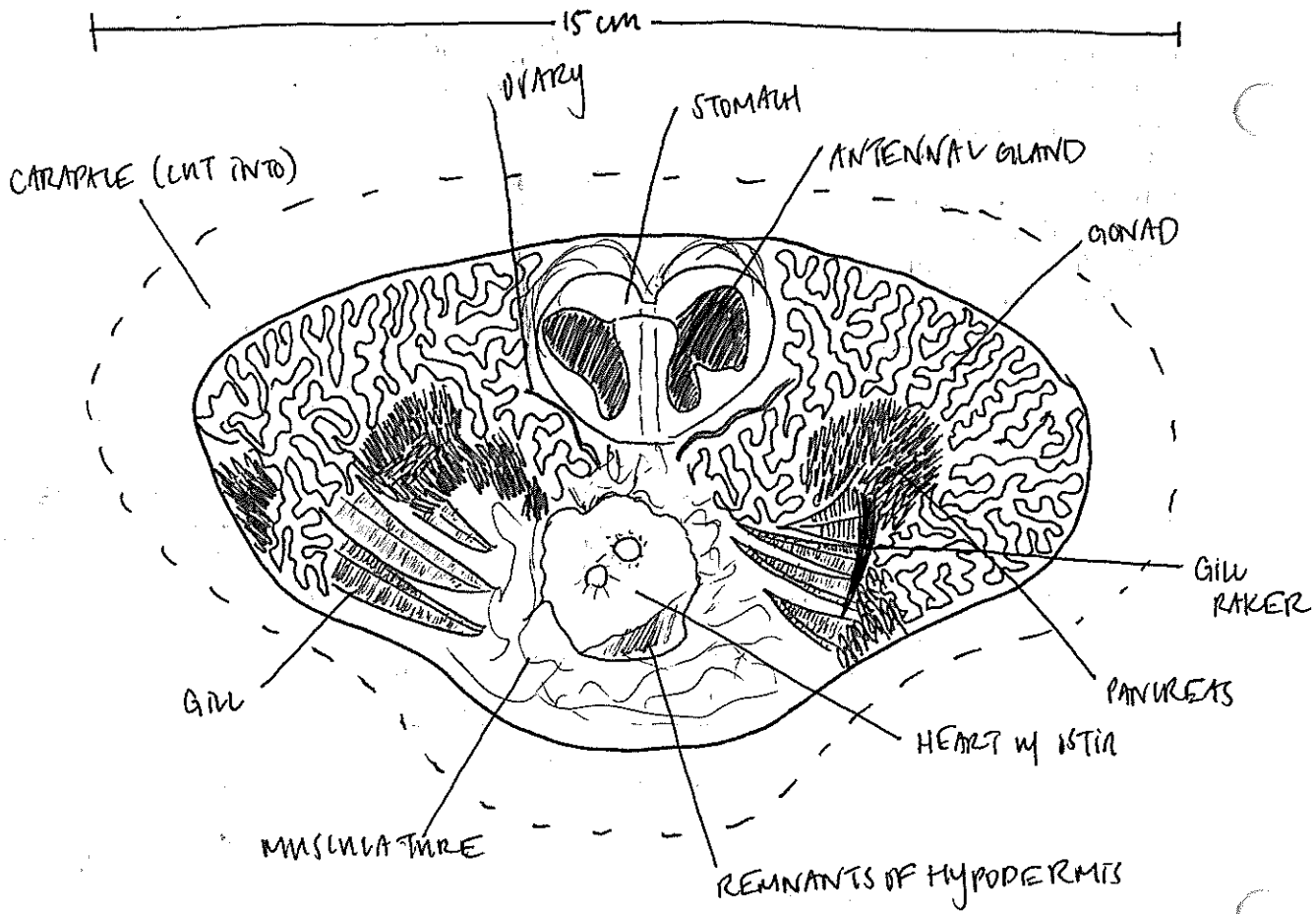


PEREOPDS 1-5

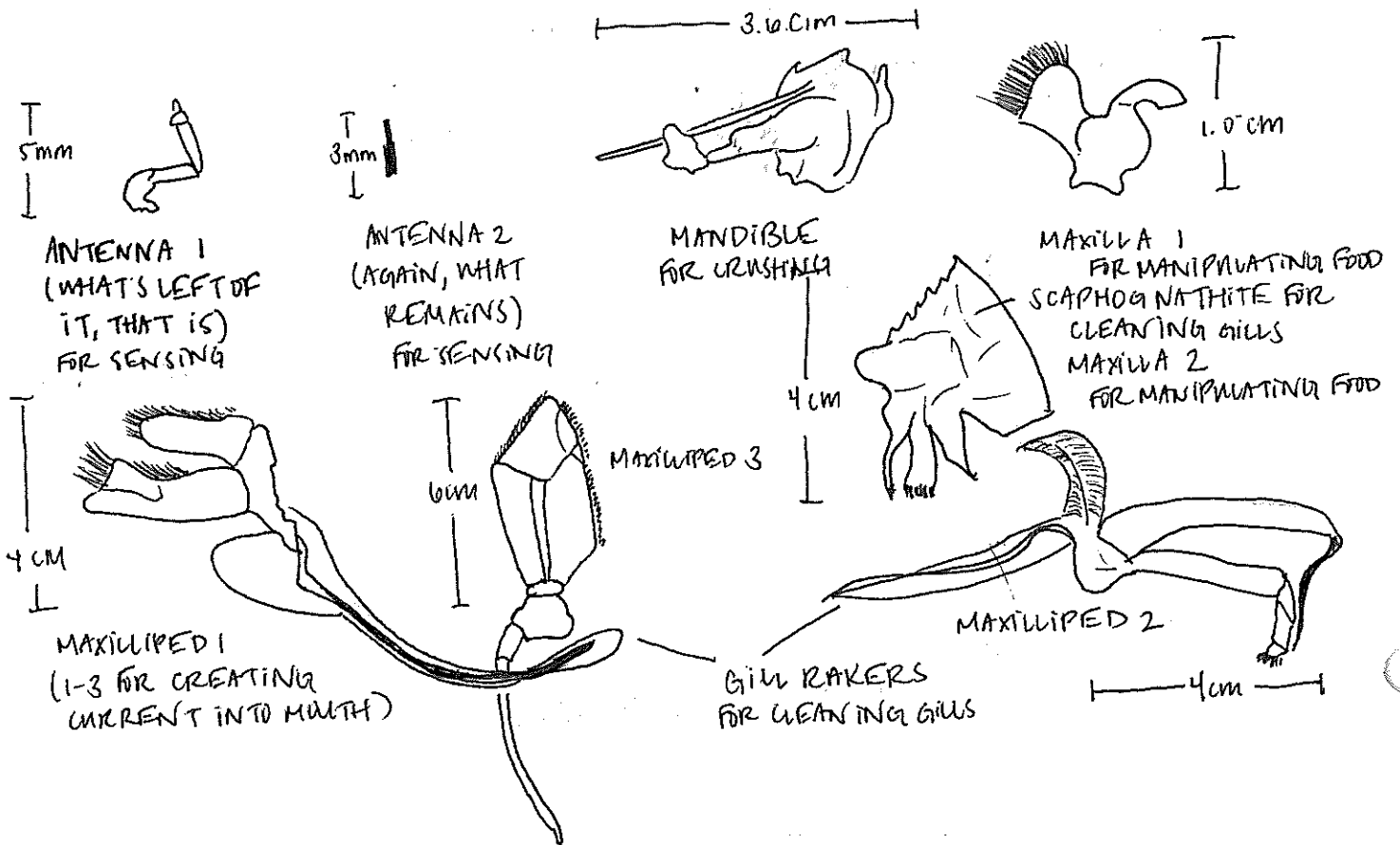
PATELLA

VENTRAL VIEW

II INTERNAL ANATOMY:



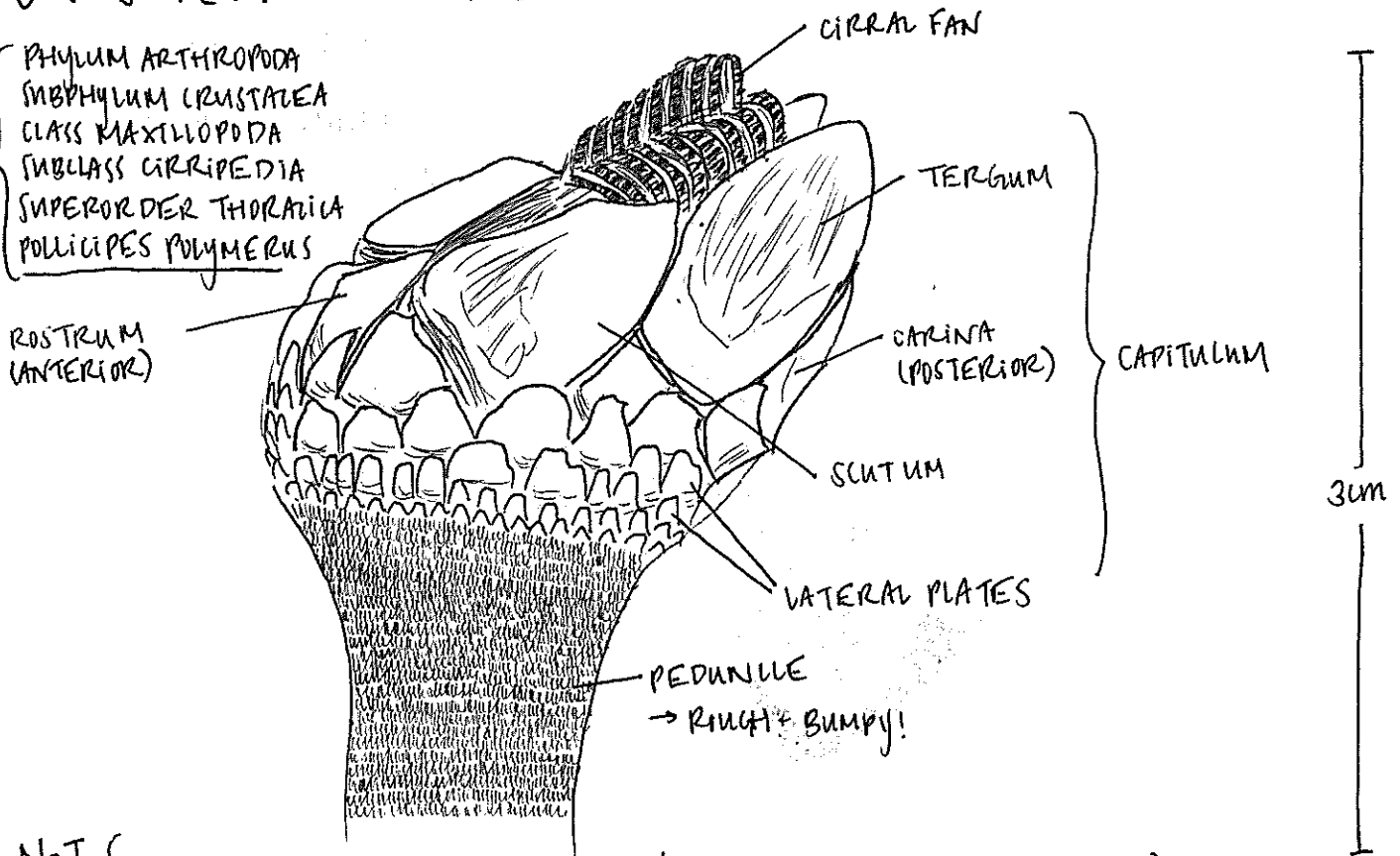
III APPENDAGES:



PHYLUM ARTHROPODA:

I GOOSENECK BARNACLE:

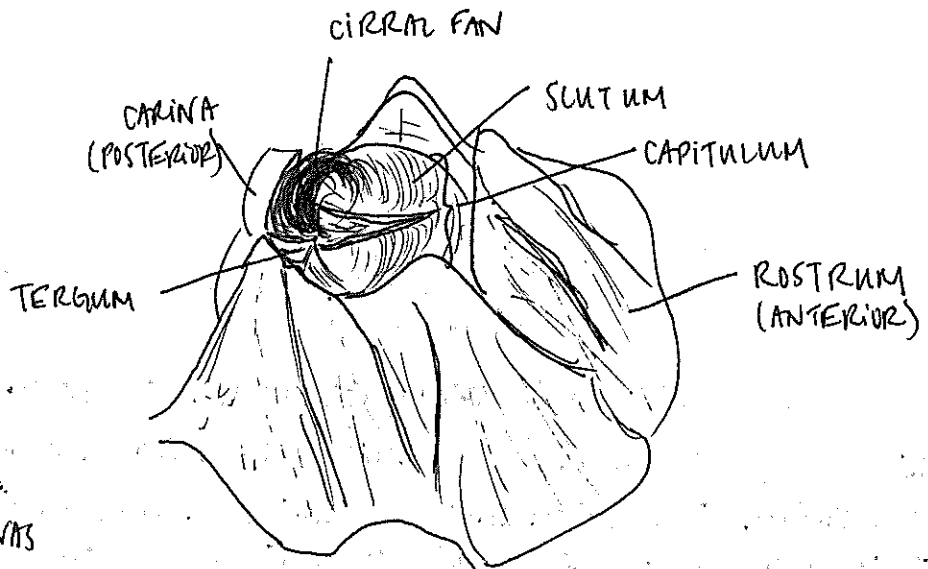
PHYLUM ARTHROPODA
 SUBPHYLUM CRUSTACEA
 CLASS MAXILLOPODA
 SUBCLASS CIRRIPEdia
 SUPERORDER THORACICA
 POLLICIPES POLYMERUS



NOTES: JUVENILES SETTLED ON PEDUNCLE | STALK IN A LUMP (NOT DRAWN). INDIVIDUAL NEVER COMPLETELY UNWURLED ITS CIRRI, OF WHICH IT HAS 20 TOTAL, AND DID NOT RESPOND TO BEING FED.

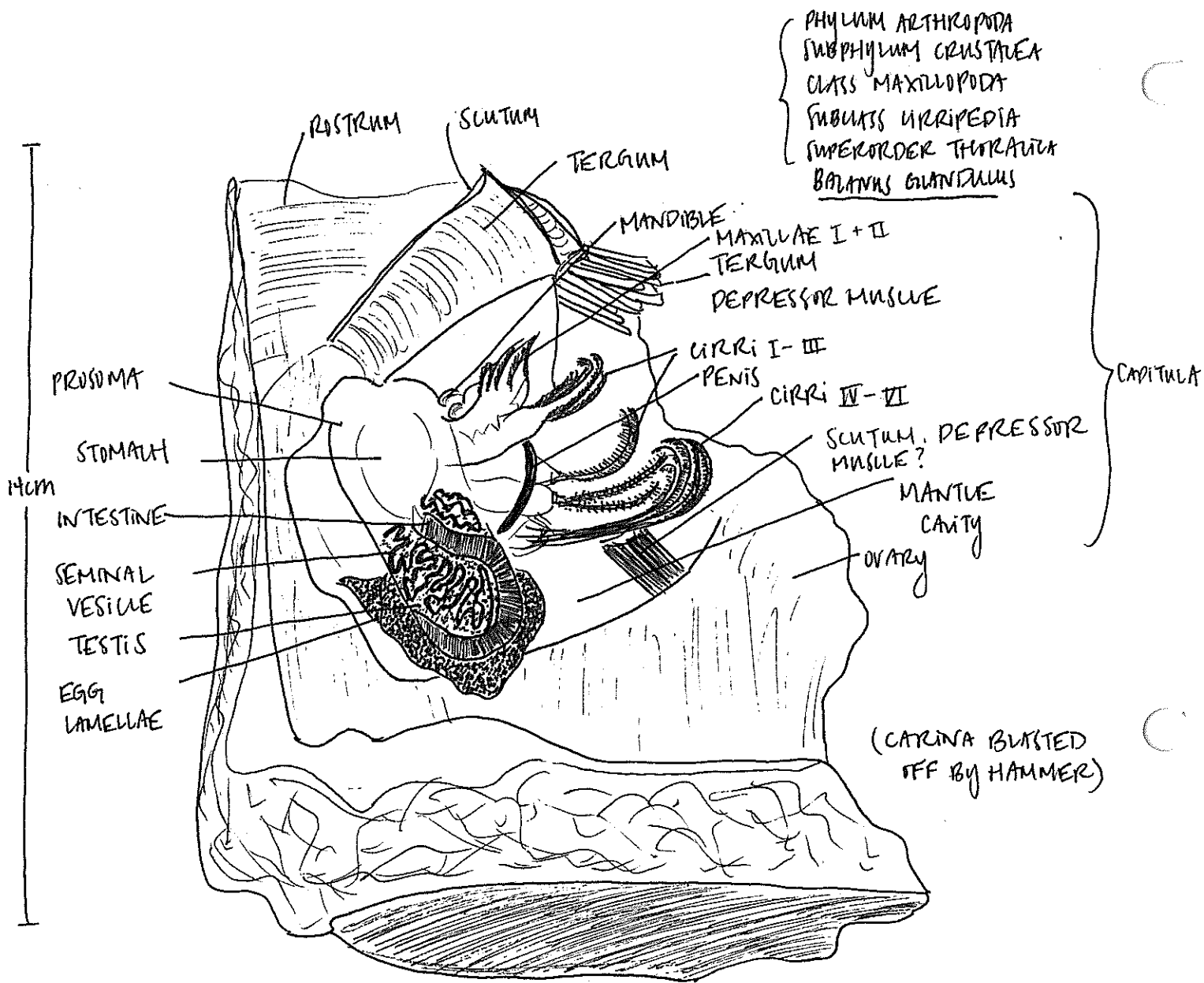
II ACORN BARNACLE:

PHYLUM ARTHROPODA
 SUBPHYLUM CRUSTACEA
 CLASS MAXILLOPODA
 SUBCLASS CIRRIPEdia
 SUPERORDER THORACICA
 BALANUS GLANDULOSUS



NOTES: HAD 2 JUVENILES GROWING ON IT, AS WELL AS A SMALL MERIDIUM! A VERY ACTIVE BARNACLE; WAS TWISTING ITS CAPITULUM AROUND A LOT, AS WELL AS SHOWING OFF ITS BEAUTIFUL PURPLE CIRRI + YELLOW "LIPS"

III BARNACLE DISSECTION:



NOTES: SMASHED OPEN THIS LARGE BARNACLE w/ A HAMMER. LOTS OF OVARY PRESENT, WHICH WHEN GENTLY CUT AWAY REVEALED EGG LAMELLAE ON THE OUTSIDE OF THE MANTLE CAVITY. THE ORGANISM WAS WIGGLING AROUND IN THE MANTLE CAVITY FOR THE DURATION OF THE DISSECTION. ALL MOUTHPARTS | CIRRI WERE WEAR AND DISTINGUISHABLE. MANY ORGANS YELLOW, w/ EXCEPTION OF PRISOMA - PINKY, w/ DARK GREEN INTESTINE, WHITE SEMINAL VESICLE - + PURPLE CIRRI. MUSCLES OPAQUE.

IV BEHAVIOR: WHEN PRESENTED w/ FOOD, POLLICIPES SHOWED NO REACTION. THE BALANUS I OBSERVED WAS ALREADY QUITE ACTIVE, AND SEEMED ENTHUSIASTIC ABOUT THE FOOD FALLING FROM THE SKY - THE CIRRI PROTRUDED TO COLLECT THE BITS OF ARTEMIA + MUSSEL JUICE. COMPARED TO A CLOSED CONTROL, THIS ORGANISM WAS MUCH MORE ACTIVE.