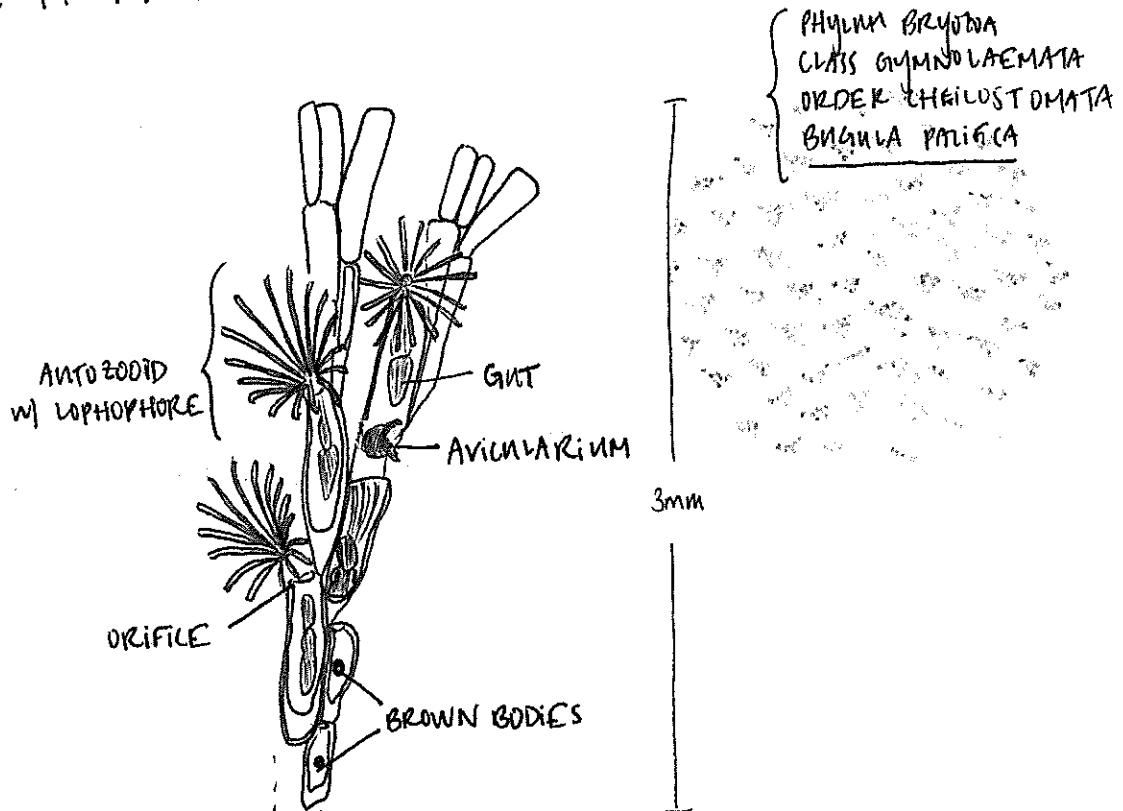


PHYLUM BRYOZOA

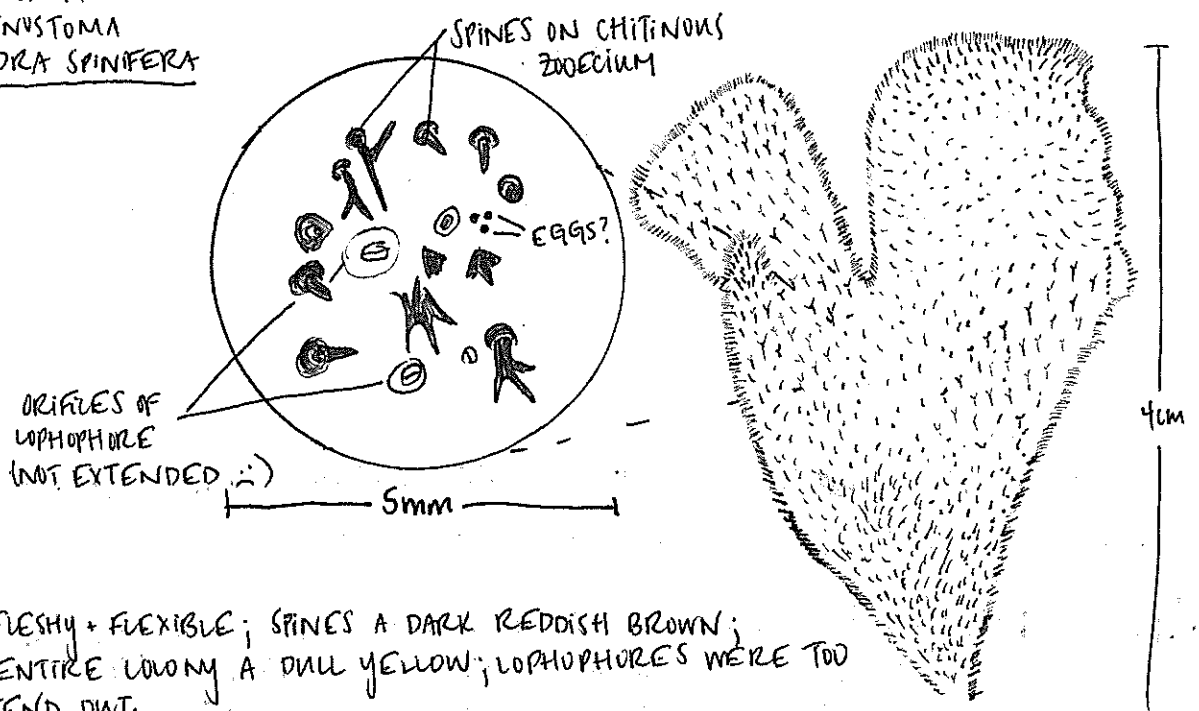
// 06.06.17

① DIVERSITY + ANATOMY:



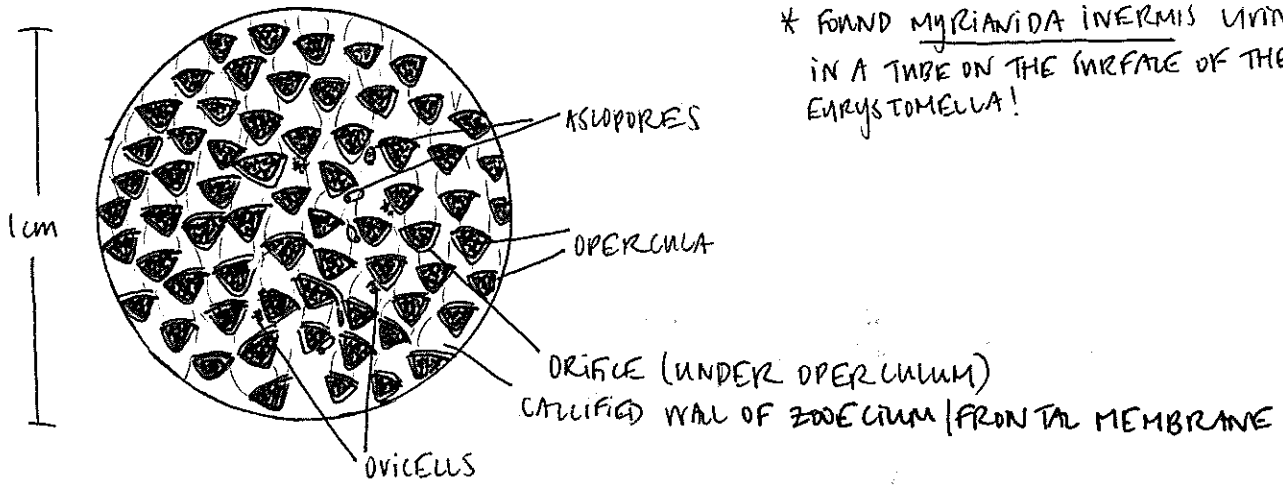
NOTES: BODY CLEAR / YELLOWED, WITH EXCEPTION OF GUT + BROWN BODIES (BROWN); AVICULARIA PRESENT, CAN SEE "JAWS" LOMPING AT SKELETON SHRIMP. IN TENTACLES / LOPHOPHORE. WILL RETRACT WHEN PERTURBED.

PHYLUM BRYOZOA
CLASS GYMNOLAEMATA
ORDER CTENOSTOMA
FRUSTULIDRA SPINIFERA



NOTES: FLESHY + FLEXIBLE; SPINES A DARK REDDISH BROWN; ENTIRE COLONY A DULL YELLOW; LOPHOPHORES WERE TOO SHY TO EXTEND OUT.

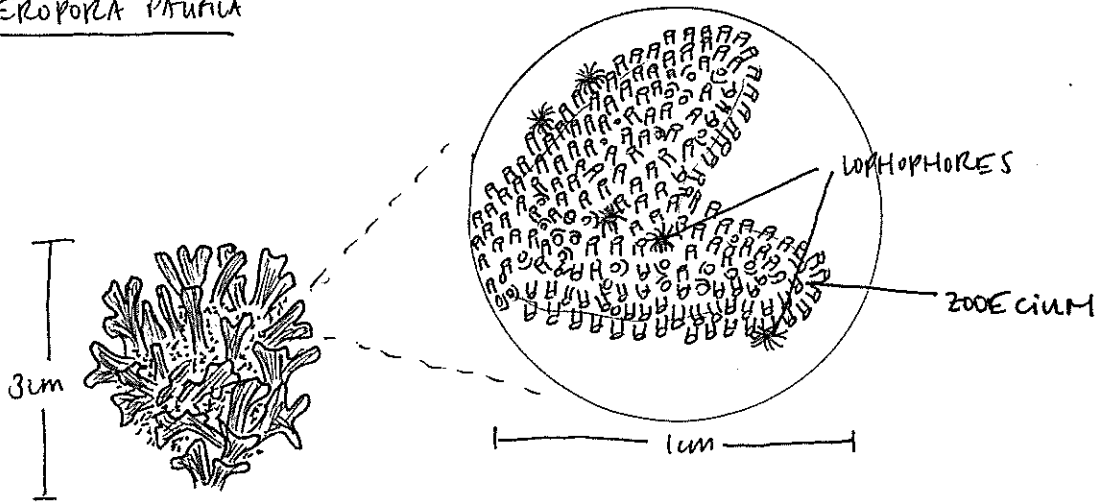
PHYLUM BRYOZOA
 CLASS GYMNOZOAEMATA
 ORDER CHEILOSTOMATA
 EURYSTOMELLA BILABATA



* FOUND MYXIAVIDA INERMIS LIVING IN A TUBE ON THE SURFACE OF THE EURYSTOMELLA!

NOTES: COLOR: BRIGHT PINK! OPERCULUM DARKER, W/ PINK CALCIFIED WALL
BEHAVIOR: NONE - NO LOPHOPHORES CAME OUT TO PLAY TODAY ALSO TRIED OBSERVING PENDORBEANIA, ALSO NO DIVE.

PHYLUM BRYOZOA
 CLASS GYMNOZOAEMATA
 SUBCLASS STENOZOAEMATA
 ORDER CHEILOSTOMATA
 HETEROPORA PUFFIA



NOTES: COLOR: YELLOW ERECT + TUBULAR CALCIFIED ZOOECIUM; BEHAVIOR: A FEW LOPHOPHORATES WERE OUT, BUT RETRACTED WHEN TOUCHED

II HABITAT + BEHAVIOR: HABITAT: LIVE ATTACHED TO ROCKS, MARCO ALGAE, WOOD, + OTHER SUBSTRATA. ONE PELAGIC ARCTIC SPECIES. FEEDING: SUSPENSION FEEDERS - USE H₂O-FLOW SUCTION CREATED BY LATERAL LILIA TO DRAW PARTICLES TOWARD THEIR TENTACLES, WHICH IS BROUGHT DOWNWARD TO THE MOUTH BY FRONTAL LILIA, WHICH ALSO AID IN FOOD CAPTURE