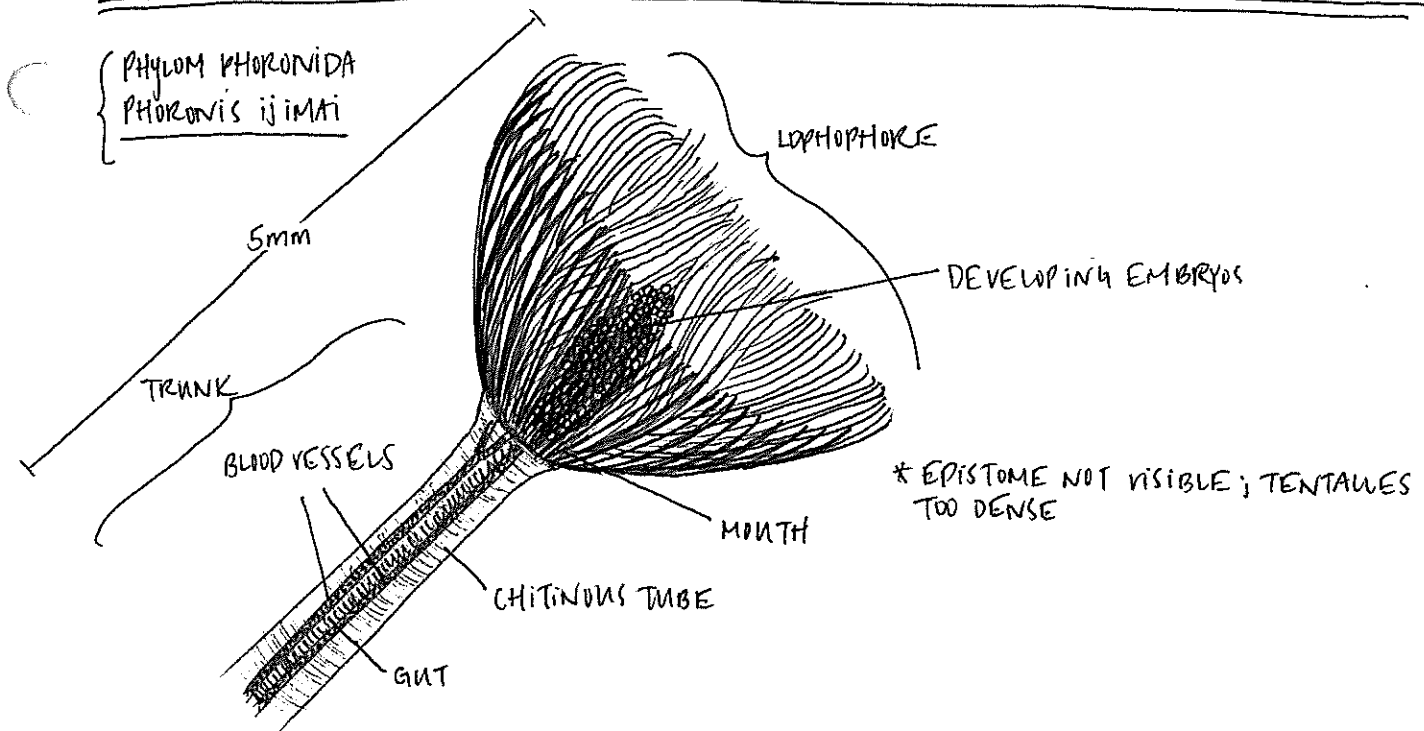


PHYLUM PHORONIDA

// 06.06.17



NOTE: DRAWN ABOVE IS ONE ZOOID IN A LARGE COLONY (~50 ZOOIDS) ON A ROCK.
COLOR: CLEAR, W RED BLOOD (HEMOGLOBIN-COLORED) IN BLOOD VESSELS OF MAIN BODY AND TENTACLES; GUT PINK, AS ARE EGGS. BEHAVIOR | MOVEMENT: WILL RETRACT WHEN TOUCHED OR TUBE BUMPED EXCESSIVELY. BLOOD MOVES UP THROUGH A TENTACLE, THEN BACK DOWN (MOVEMENT IS UNIDIRECTIONAL AT ANY GIVEN TIME, BUT OVERALL BIDIRECTIONAL).
HABITAT: COLLECTED FROM CHARLESTON BOAT BASIN; BURROWING INTO A ROCK IN CALIFIED TUBES.
FEEDING: CILIARY ACTION DRIVES H₂O INTO THE RING OF TENTACLES ABOVE THE LOPHOPHORE AND OUTWARD THROUGH THE NARROW SPACES BETWEEN THE TENTACLES. SUSPENDED FOOD PARTICLES CAN BE CAPTURED BY THE TENTACULAR CILIA + MUCUS, TRANSFERRED TO THE CILIA OF THE FOOD GROOVE, THEN TO THE MOUTH FOR DIGESTION.

